

File: N:\A\2018\1800467-TSD-Rutkin-Elementary-School\CAD\Plot\1800467-C30-SITE.dwg TAB: C300
 Plotted: 12/17/19 at 11:44am By: rikashima
 02/28/2019 4:06:14 PM



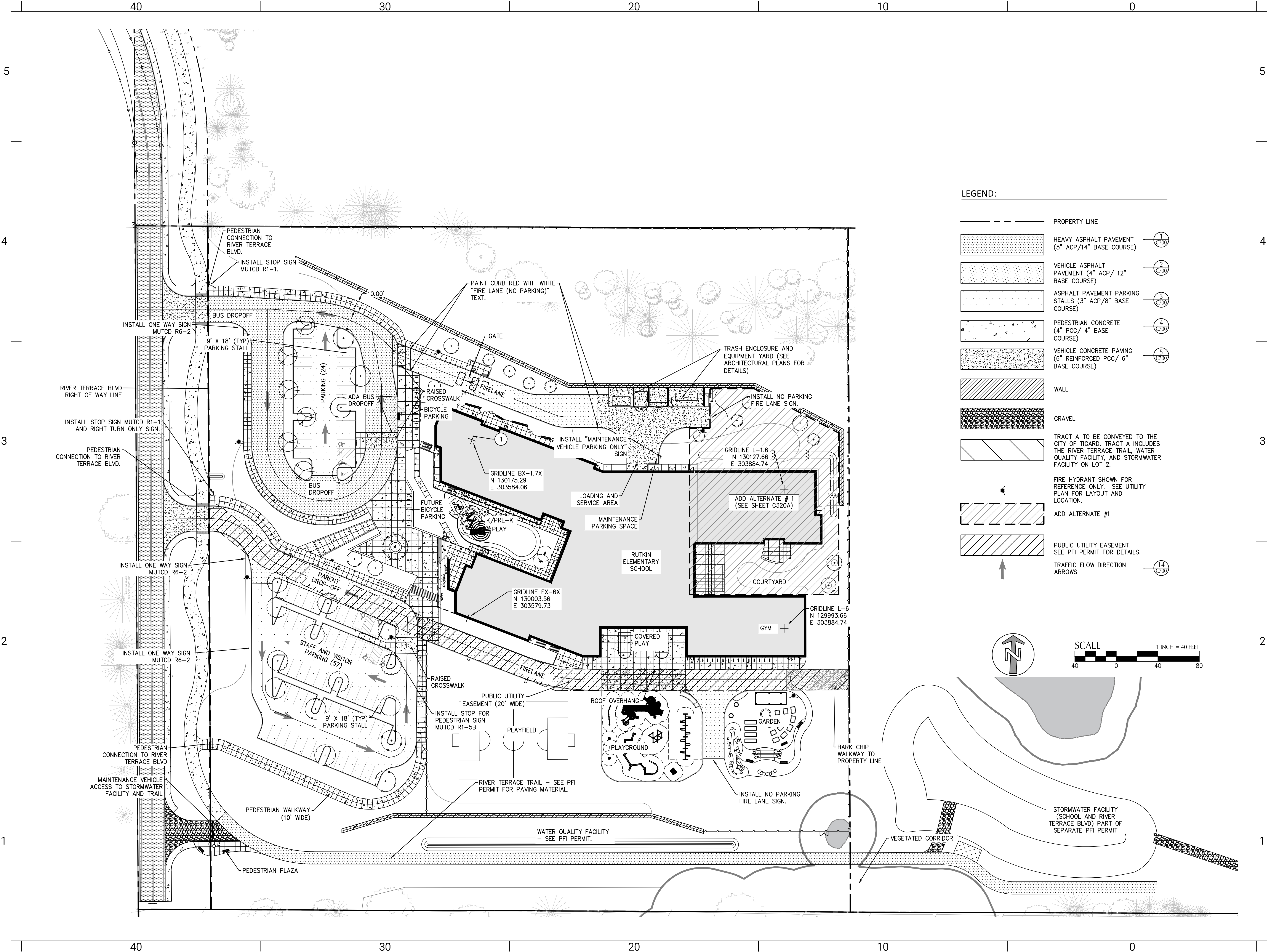
BORA

Bora Architects, Inc.
 720 SW Washington, Suite 800
 Portland, Oregon 97205
 503.226.1575
 www.bora.co

ISSUED FOR
 INFORMATIONAL
 PURPOSES ONLY

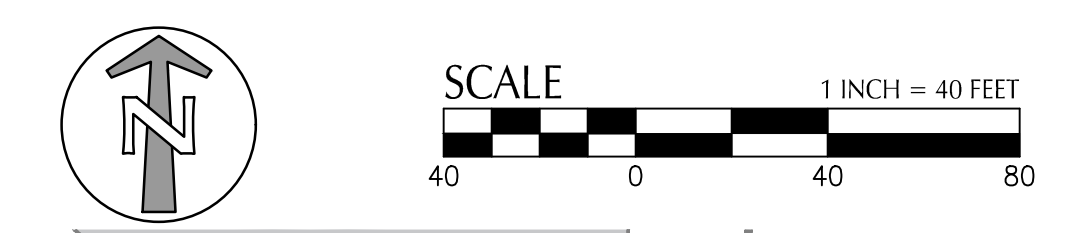
NOT FOR
 CONSTRUCTION

ART RUTKIN ELEMENTARY SCHOOL TIGARD TUALATIN SCHOOL DISTRICT



LEGEND:

- PROPERTY LINE
- HEAVY ASPHALT PAVEMENT (5" ACP/14" BASE COURSE)
- VEHICLE ASPHALT PAVEMENT (4" ACP/ 12" BASE COURSE)
- ASPHALT PAVEMENT PARKING STALLS (3" ACP/8" BASE COURSE)
- PEDESTRIAN CONCRETE (4" PCC/ 4" BASE COURSE)
- VEHICLE CONCRETE PAVING (6" REINFORCED PCC/ 6" BASE COURSE)
- WALL
- GRAVEL
- TRACT A TO BE CONVEYED TO THE CITY OF TIGARD. TRACT A INCLUDES THE RIVER TERRACE TRAIL, WATER QUALITY FACILITY, AND STORMWATER FACILITY ON LOT 2.
- FIRE HYDRANT SHOWN FOR REFERENCE ONLY. SEE UTILITY PLAN FOR LAYOUT AND LOCATION.
- ADD ALTERNATE #1
- PUBLIC UTILITY EASEMENT. SEE PFI PERMIT FOR DETAILS.
- TRAFFIC FLOW DIRECTION ARROWS



| MARK | DATE | DESCRIPTION |
|---------|--------------------|-------------|
| Issued: | SEPTEMBER 10, 2019 | |
| Scale: | | PER PLAN |

Copyright 18001
 LAND USE SUBMITTAL

C300