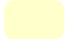








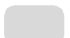




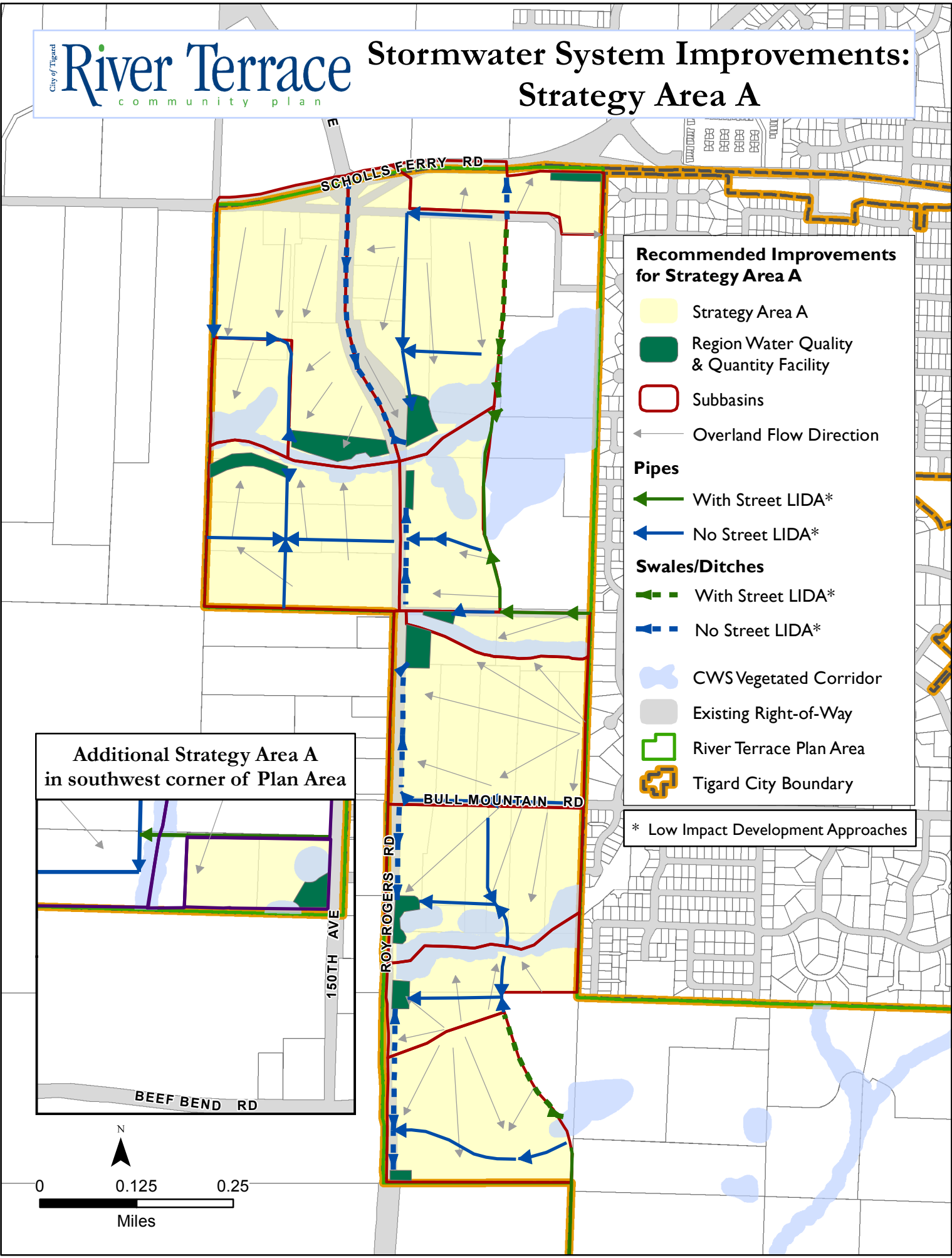
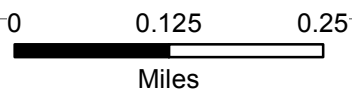
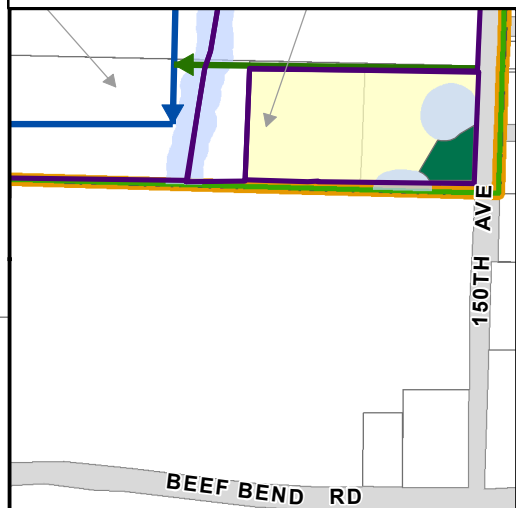
Stormwater System Improvements: Strategy Area A

Recommended Improvements for Strategy Area A

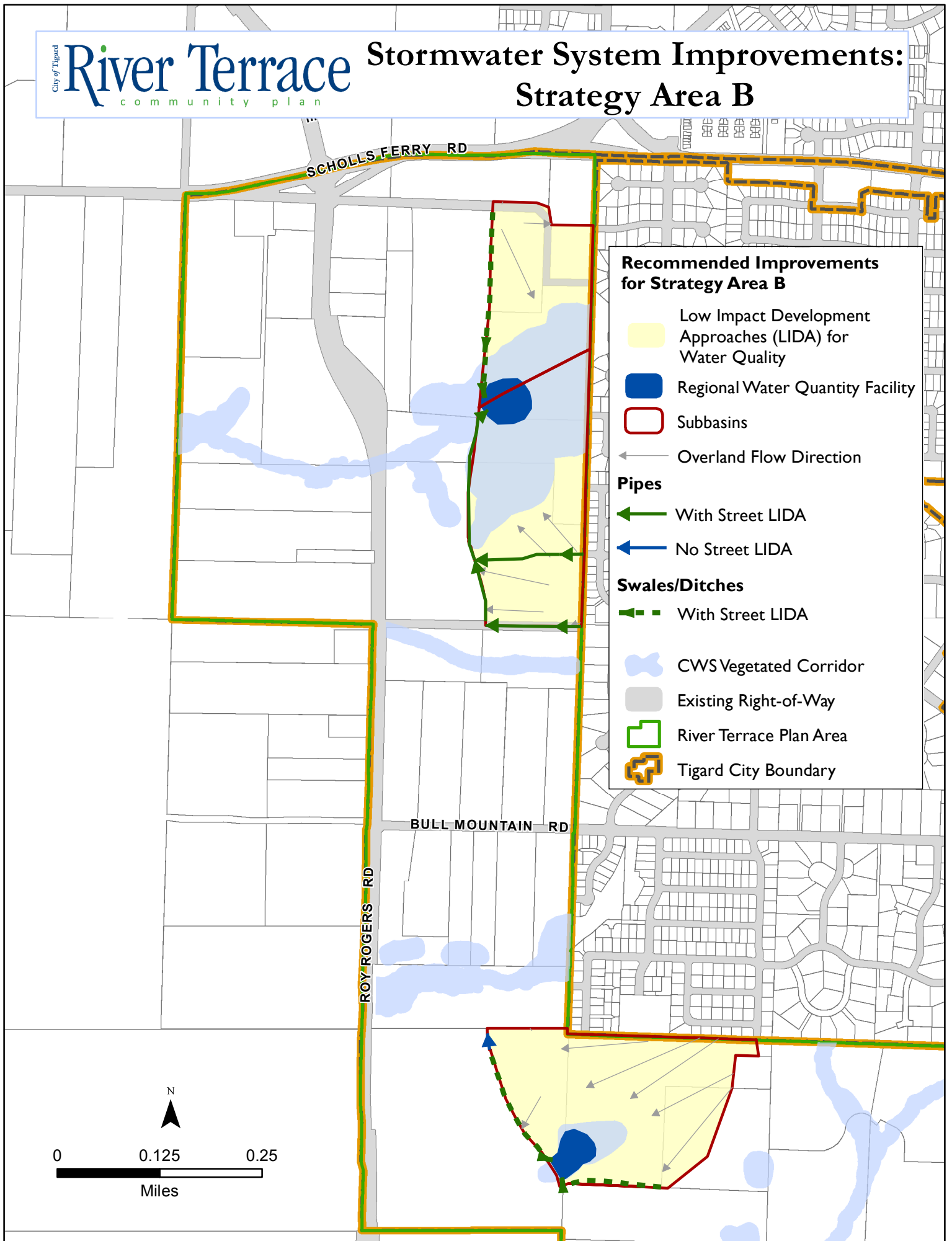
-  Strategy Area A
-  Region Water Quality & Quantity Facility
-  Subbasins
-  Overland Flow Direction
- Pipes**
-  With Street LIDA*
-  No Street LIDA*
- Swales/Ditches**
-  With Street LIDA*
-  No Street LIDA*
-  CWS Vegetated Corridor
-  Existing Right-of-Way
-  River Terrace Plan Area
-  Tigard City Boundary

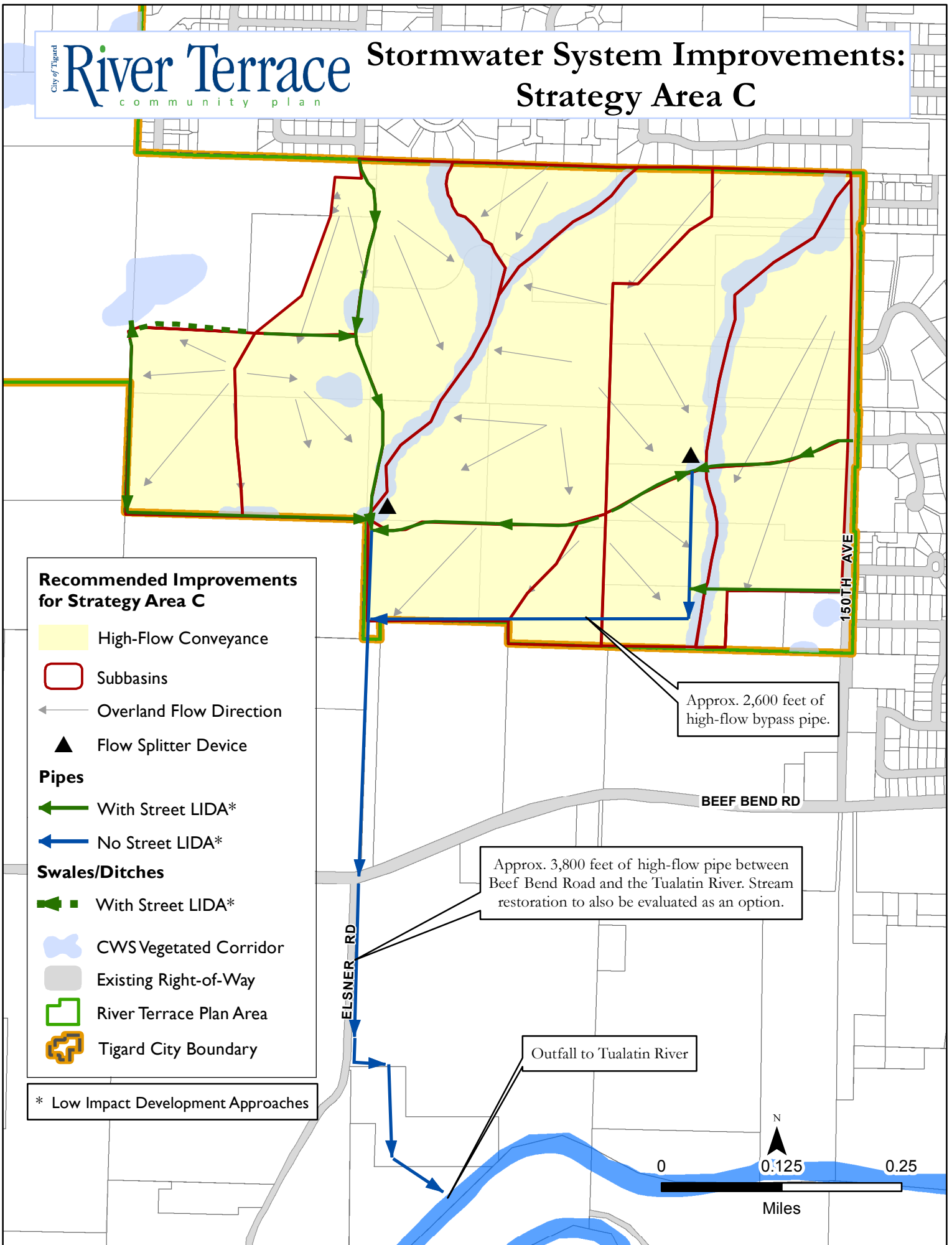
* Low Impact Development Approaches

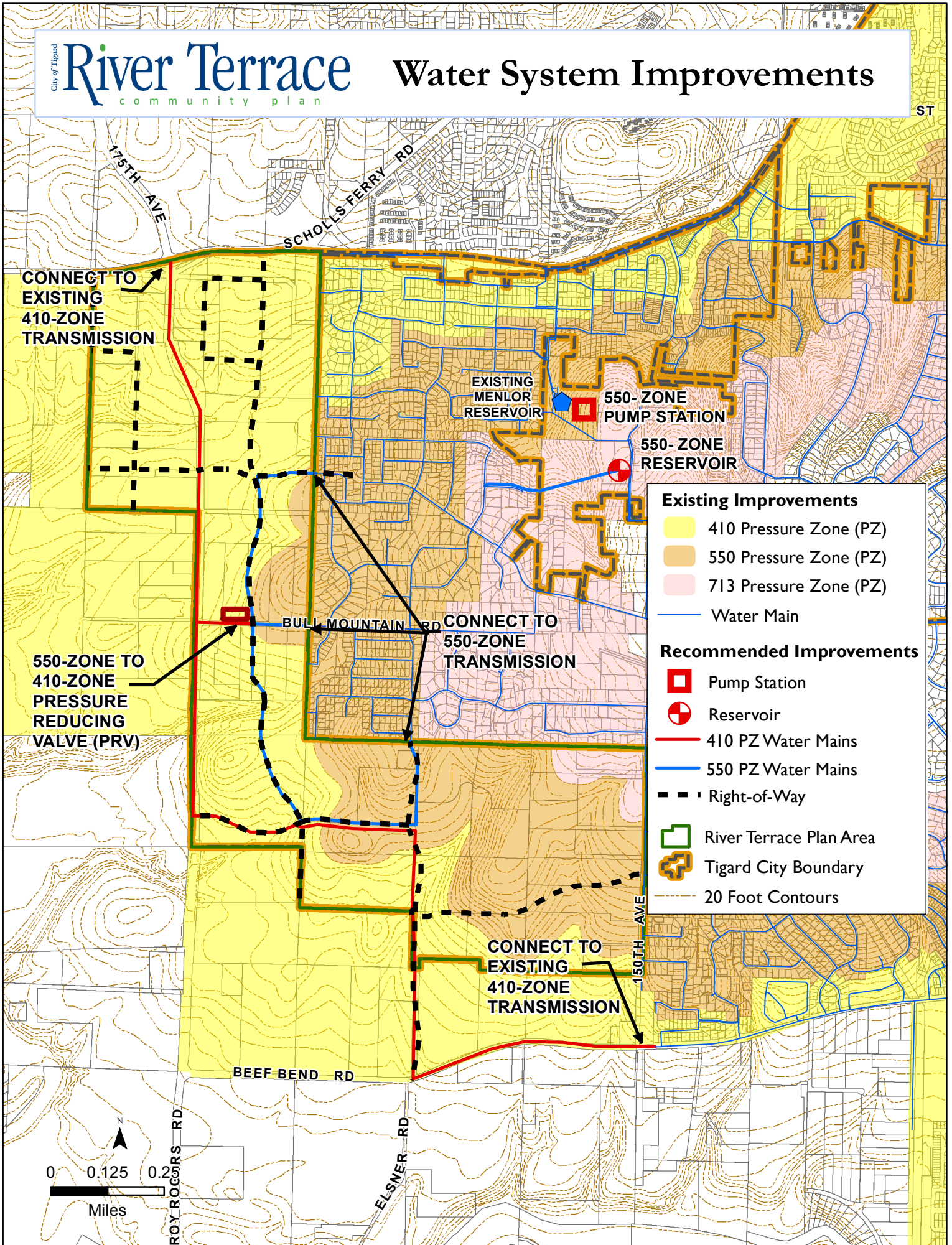
Additional Strategy Area A in southwest corner of Plan Area



Stormwater System Improvements: Strategy Area B





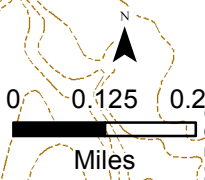


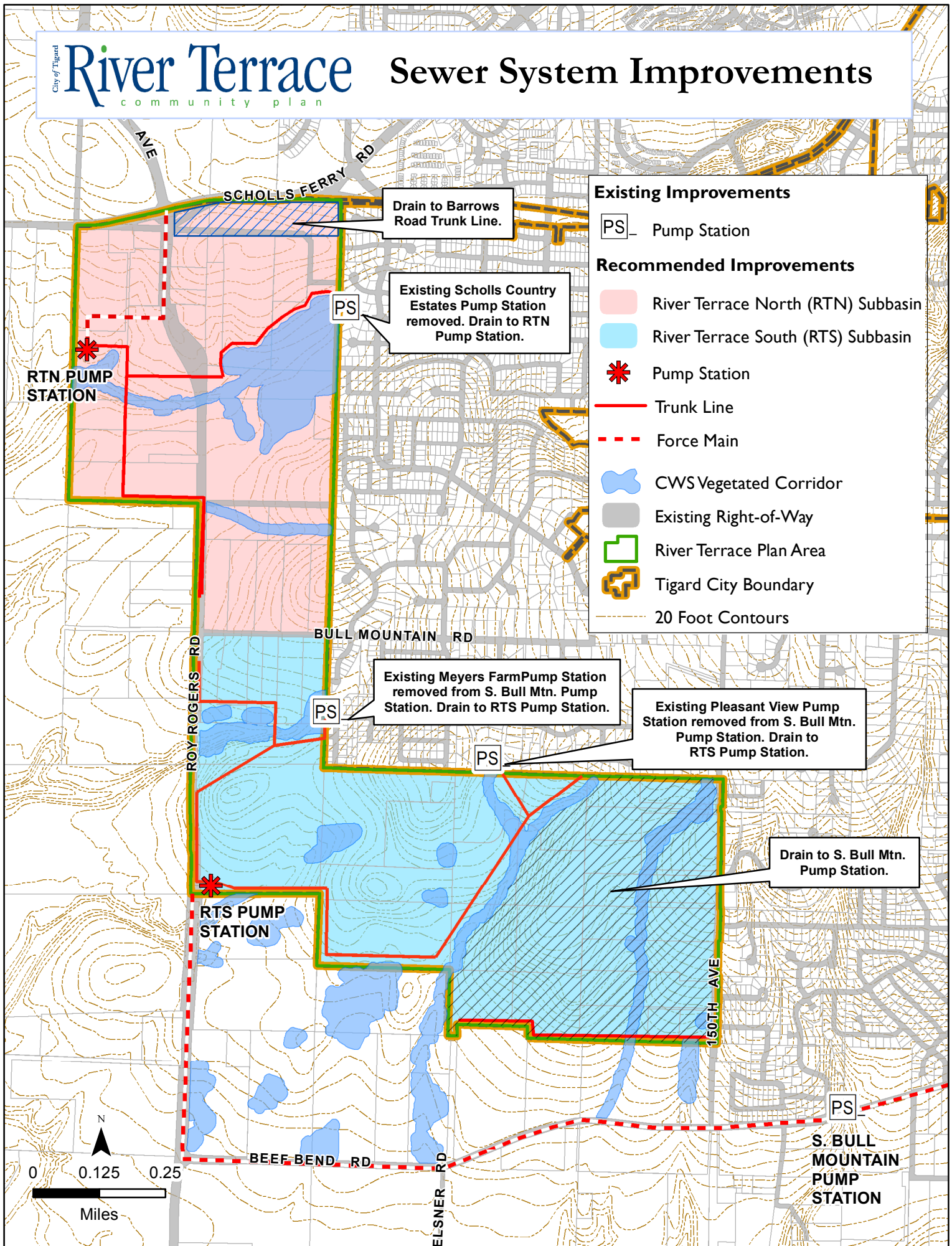
Existing Improvements

- 410 Pressure Zone (PZ)
- 550 Pressure Zone (PZ)
- 713 Pressure Zone (PZ)
- Water Main

Recommended Improvements

- Pump Station
- Reservoir
- 410 PZ Water Mains
- 550 PZ Water Mains
- Right-of-Way
- River Terrace Plan Area
- Tigard City Boundary
- 20 Foot Contours





Existing Improvements

- PS - Pump Station

Recommended Improvements

- River Terrace North (RTN) Subbasin
- River Terrace South (RTS) Subbasin
- Pump Station
- Trunk Line
- Force Main
- CWS Vegetated Corridor
- Existing Right-of-Way
- River Terrace Plan Area
- Tigard City Boundary
- 20 Foot Contours

Drain to Barrows Road Trunk Line.

Existing Scholls Country Estates Pump Station removed. Drain to RTN Pump Station.

Existing Meyers Farm Pump Station removed from S. Bull Mtn. Pump Station. Drain to RTS Pump Station.

Existing Pleasant View Pump Station removed from S. Bull Mtn. Pump Station. Drain to RTS Pump Station.

Drain to S. Bull Mtn. Pump Station.

RTN PUMP STATION

RTS PUMP STATION

S. BULL MOUNTAIN PUMP STATION